

TENOR SAX.

THE JAZZTET - "NOVEMBER AFTERNOON"

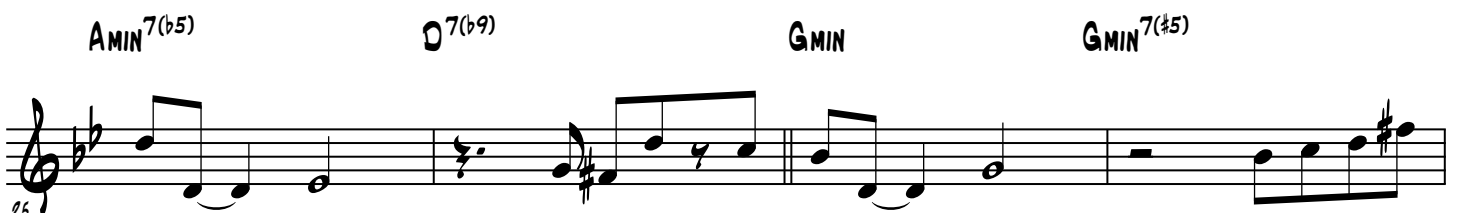
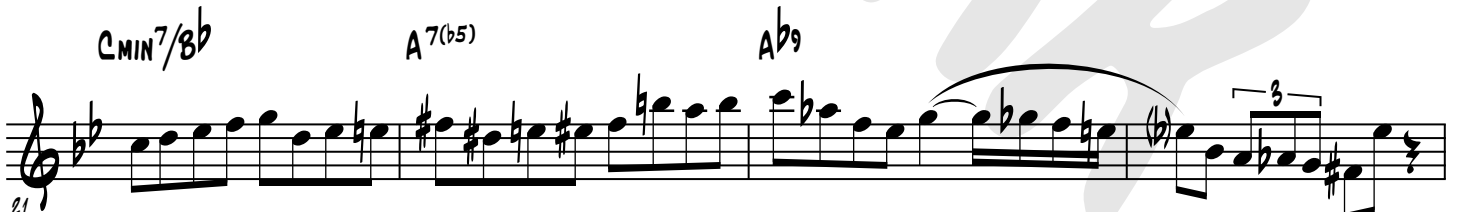
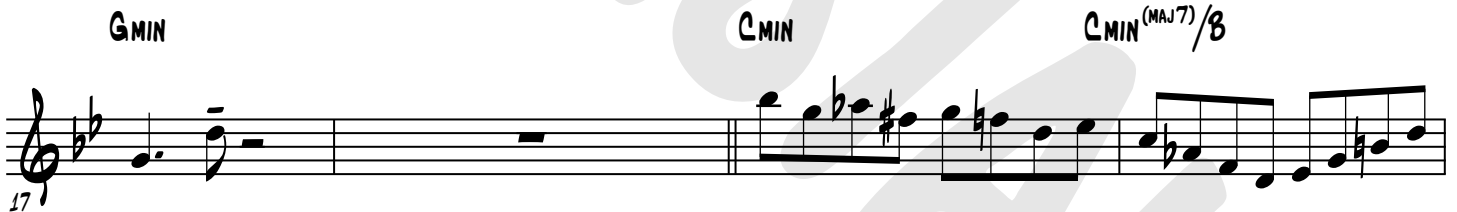
BENNY GOLSON'S SOLO

TOM MCINTOSH
TRANS. BY MIKE TOMASIAK

MEDIUM-UP SWING ♩ = 240

GMIN
BREAK

GMIN



Eb7

D7

GMIN

CMIN

CMIN(MAJ7)/B

CMIN7/Bb

A7(b5)

Ab9

AMIN7(b5)

D7(b9)

GMIN

GMIN7(#5)

GMIN⁶ GMIN⁷ GMIN A7 D7

29

GMIN⁷ C7 F7 Bb7 Eb7

33

GMIN D7

37

2ND CHORUS

GMIN GMIN

41

DELAYED

45

49

Eb7 D7

53

THE JAZZTET - "NOVEMBER AFTERNOON"

57 **GMIN** **CMIN** **CMIN^(MAJ7)/B**

Musical staff 57-60 in G minor. It begins with a G minor triad (G-Bb-A) and a half note G. The melody continues with quarter notes A, Bb, and C. A double bar line occurs after the first measure. The second measure is a half note C, followed by quarter notes Bb, A, and G. The staff ends with a quarter rest.

61 **CMIN7/Bb** **A7(b5)** **A^b9**

Musical staff 61-64 in G minor. It starts with a half note G, followed by quarter notes A, Bb, and C. A double bar line is after the second measure. The third measure is a half note Bb, followed by quarter notes A, G, and F. The staff ends with a quarter rest.

65 **AMIN7(b5)** **D7(b9)** **GMIN** **GMIN7(#5)**

Musical staff 65-68 in G minor. It begins with quarter notes G, A, Bb, and C. A double bar line is after the second measure. The third measure is a half note G, followed by quarter notes A, Bb, and C. The staff ends with a quarter rest.

69 **GMIN^b** **GMIN⁷** **GMIN** **A7** **D7**

Musical staff 69-72 in G minor. It features eighth-note triplets. The first triplet is G, Ab, Bb. The second triplet is Ab, Bb, C. This is followed by quarter notes G, A, Bb, and C. A double bar line is after the fourth measure. The fifth measure is a half note G, followed by quarter notes A, Bb, and C. The staff ends with a quarter rest.

73 **GMIN⁷** **C7** **F7** **Bb7** **Eb7**

Musical staff 73-76 in G minor. It starts with quarter notes G, A, Bb, and C. A double bar line is after the second measure. The third measure is a half note Bb, followed by quarter notes A, G, and F. The fourth measure is a half note Eb, followed by quarter notes D, C, and Bb. The staff ends with a quarter rest.

77 **GMIN** **D7**

Musical staff 77-80 in G minor. It begins with a half note G, followed by quarter notes A, Bb, and C. A double bar line is after the second measure. The third measure is a half note G, followed by quarter notes A, Bb, and C. The staff ends with a quarter rest.

81 **GMIN** **GMIN**

Musical staff 81-84 in G minor. It starts with quarter notes G, A, Bb, and C. A double bar line is after the second measure. The third measure is a half note G, followed by quarter notes A, Bb, and C. The staff ends with a quarter rest.